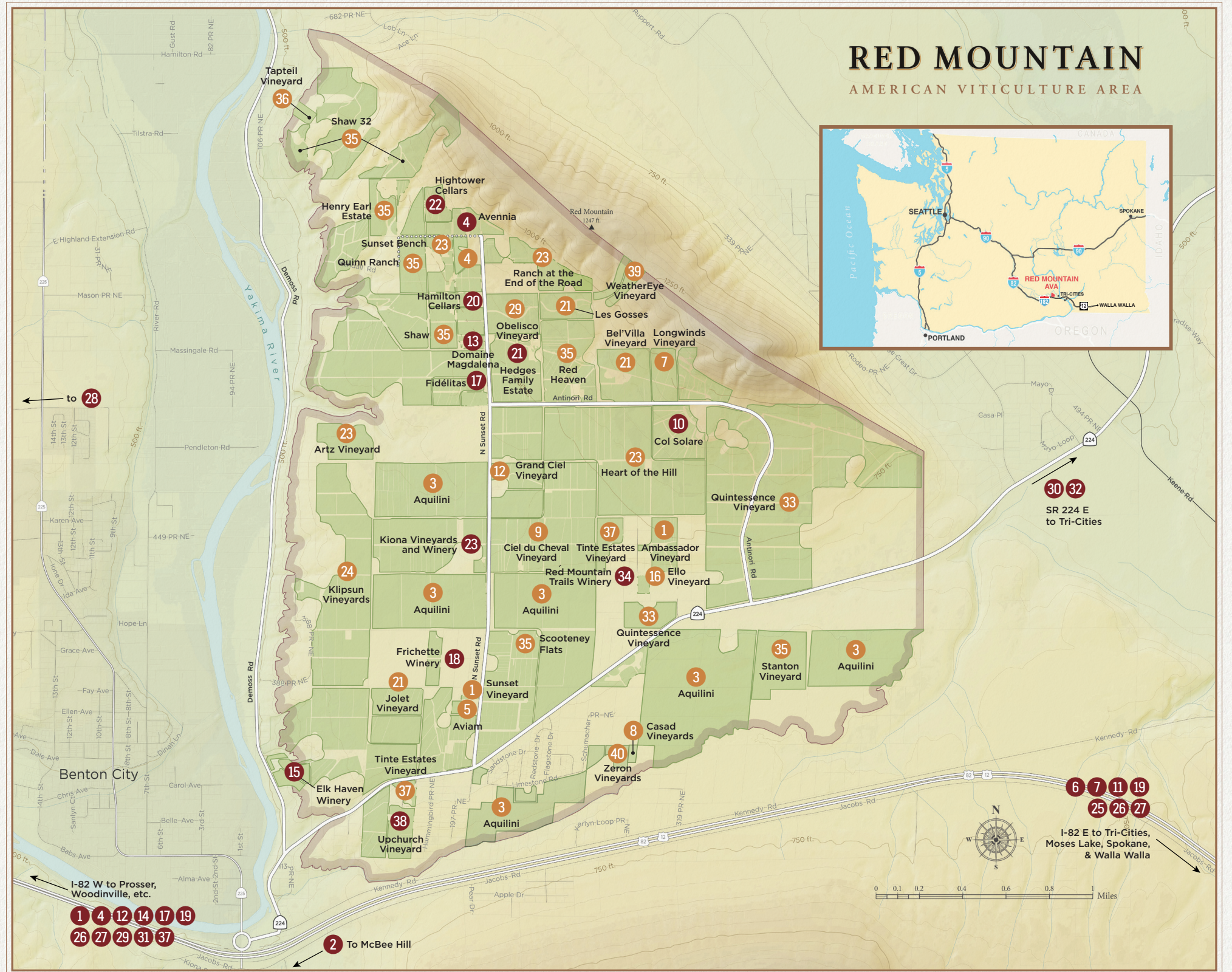


## MEMBER VINEYARDS AND WINERIES

- |    |   |    |
|----|---|----|
| 1  | Ambassador Wines of Washington,<br>Ambassador Vineyard & Sunset Vineyard  | W  |
| 2  | Anelare   | TC |
| 3  | Aquilini  | RM |
| 4  | Avennia   | W  |
| 5  | Aviam   | TC |
| 6  | Barnard Griffin   | TC |
| 7  | Canvasback & Longwinds Vineyard   | WW |
| 8  | Casad Vineyards   | RM |
| 9  | Ciel du Cheval  | WW |
| 10 | Col Solare Winery & Col Solare Estate Vineyard  | RM |
| 11 | Côtes de Ciel   | WW |
| 12 | DeLille Cellars & Grand Ciel Vineyard   | W  |
| 13 | Domaine Magdalena Vineyard  | RM |
| 14 | Eagle Harbor Wine Company   | BI |
| 15 | Elk Haven Winery  | RM |
| 16 | Ello Vineyard   | RM |
| 17 | Fidélitas & Fidélitas Estate Vineyard   | RM |
| 18 | Frichette Winery  | RM |
| 19 | Guardian Cellars  | W  |
| 20 | Hamilton Cellars & Bel Tramonto Vineyard  | RM |
| 21 | Hedges Family Estate & Hedges Vineyard Partnership  | RM |
| 22 | Hightower Cellars & Hightower Vineyard  | RM |
| 23 | Kiona Vineyards and Winery, Heart of the Hill,<br>Ranch at the End of the Road, Sunset Bench<br>& Artz Vineyard | RM |
| 24 | Klipsun Vineyards   | SP |
| 25 | Liberty Lake Wine Cellars   | SP |
| 26 | Mark Ryan Winery  | WW |
| 27 | Market Vineyards  | TC |
| 28 | Muret-Gaston Winery   | TC |
| 29 | Obelisco Estate Winery  | W  |
| 30 | Pacific Rim Winemakers  | W  |
| 31 | Page Cellars  | W  |
| 32 | Palencia Wine Company   | TC |
| 33 | Quintessence Vineyards LLC  | RM |
| 34 | Red Mountain Trails Winery  | RM |
| 35 | Shaw Vineyards Inc.   | W  |
| 36 | Tapteil Vineyard  | W  |
| 37 | Tinte Cellars   | W  |
| 38 | Upchurch Vineyard   | RM |
| 39 | WeatherEye Vineyard   | W  |
| 40 | Zeron Vineyards   | RM |

## LEGEND

Tasting Room Locations	Type		
BI	Bainbridge Island		Vineyard on Red Mountain
ML	Moses Lake		Winery
P	Prosser		Tasting Room Locator
RM	Red Mountain		Vineyard-only Locator
SP	Spokane		
TC	Tri-Cities		
WW	Walla Walla		
W	Woodinville/Seattle Area		





# RED MOUNTAIN AVA ALLIANCE

*Acclaimed by critics, superior by nature*

The Red Mountain AVA is located on a southwest-facing slope in South Central Washington, a three and one-half hour drive from Seattle. At 4,040 acres (1,635 hectares), this is the warmest and most densely planted wine-grape growing region in Washington. It has a unique combination of diverse geology, gentle south slope, consistent winds and notable heat profile. A complex mixture of the most rare and highly valued soil types in Washington were created by wind-blown silt and sand over glacial outflow. The AVA's red wine grapes, such as Cabernet Sauvignon, Merlot and Syrah, are highly prized for creating wines of superb concentration and depth, which consistently earn critical acclaim.

## THE TERROIR

Since the dawn of time, natural forces have worked powerfully and mysteriously and, in rare circumstances, have aligned to collectively create earthly wonders, such as exquisite gems that are singular in all the world.

One of those gems remained hidden in plain view, waiting patiently for thousands of years until such time certain adventurous, wine-loving souls, would have the wisdom and foresight to reveal it to the world. This is the story of Red Mountain's "terroir."



## TERROIR CHARACTERISTICS

### –SOUTHWEST FACING SLOPE–

The southwest slope of the Red Mountain AVA provides the vineyards in the region with a directional aspect to the sun that is ideal for prolonged sunlight exposure and warmth. These highly desirable conditions allow for a ripeness in tannins that is recognized as a primary characteristic of Red Mountain fruit.

### –WARM SUMMERS–

Red Mountain experiences more growing degree days than any other region in the state. The high latitude (N 46°) and topography contribute to temperature swings experienced during the growing season. These heat accumulation days create ideal temperatures for highly marketable grapes, exhibiting ripeness and concentration. The cooler evenings help to retain acidity levels which allows for the exceptional balance and structure found in Red Mountain grapes, and the wines crafted from them

### –AVA SPECIFIC SOILS–

The predominate soils of Red Mountain are not found anywhere else in the state. Wind-blown Loess (Warden, Hezel, and Scooteny) were brought in by prehistoric floods. The high alkalinity and calcium carbonate content of the soil, along with its granular consistency, allows for each vine to form a well established root system. In soils with this composition, root systems are able to reach deep to obtain the necessary nutrients and moisture.

### –LOW RAINFALL–

Red Mountain gathers less than 8 inches of rain per year, requiring irrigation in the vineyards. The use of drip irrigation provides ideal grape growing conditions through canopy management. Additionally, Red Mountain vines experience dramatically lower mold and mildew pressure compared to most other vineyard regions.

### –CONSISTENT WINDS–

The prevailing winds come out of the Southwest and are notable for their frequency and velocity. The regular gusts of warm air flow through the AVA's vineyards during the growing season. This keeps the grape clusters small and concentrates the flavors of the fruit, contributing to their richness and intensity.

## RED MOUNTAIN TIMELINE

- 10,000 BC ○ Catastrophic floodwaters from repeated breaks of the ice dams forming Lake Missoula sculpted the landscape of southeastern Washington, depositing high-mineral, high-carbonate glacial eroded sands, gravels, cobbles and boulders on the shoulders of a shallow ridge, now called Red Mountain
- 1972-75 ● Holmes, Johnson, Lovell, Ward and Williams families created infrastructure (wells, electricity and irrigation) for first vineyard
- 1975 ● First plantings; 4 acres of each of Cabernet Sauvignon, Chardonnay and Riesling
- 1978 ● First harvest sold for commercial sales
- 1980 ● First bonded winery on Red Mountain
- 1990 ● First internationally distributed wine from Red Mountain fruit
- 2001 ● Red Mountain AVA formally established, April 3
- 2007 ● First international joint venture; Ste. Michelle and the Antinori family open winery on Red Mountain
- 2008 ● Red Mountain AVA Alliance formed
- 2015 ● Kennewick Irrigation District finalize system to deliver enough water to cover 1,785 acres on Red Mountain
- 2021 ● Red Mountain celebrates 20 years of AVA status

PO Box 850 Benton City, WA 99320  
inquiries@redmountainava.com

[www.RedMountainAVA.com](http://www.RedMountainAVA.com)  
@RedMtnAVA | #RedMtn